

VersoJet

for hp designjet 5500 series



dual-sided printing made easy

dual sided
printing
made easy



VersoJet
+
hp designjet
5500 series

VersoJet for HP Designjet 5500 series

The high productivity solution to your large format printing needs, delivering true production speed, exceptional colour photo-quality images and reliable performance, with the added bonus of simplified workflow and increasing unattended operation.

VersoJet is the best value double-sided proofing and printing solution on the market. It allows for the proofing of different style impositions, printing of dual-sided posters and banners.

Available for HP Designjet 5500 42" and 60" series, the simple design of the duplexer allows one to retrofit to the existing large format printer or purchase the complete system, consisting of the printer and the duplexer. VersoJet is easily mounted to any HP Designjet 5000 printer.

It is also used to produce data accurate, color accurate in register duplexed impositions of jobs for production and sales purposes.

The high quality proofs produced by VersoJet eliminates expensive time and labour required to glue 2 single sided impositions. The high-speed POS (Point of Sales) posters and banners can automatically be printed on both sides to give an attractive and professional look.

VersoJet and HP's Designjet 5500 series are designed specifically to meet the exact standards of print service providers, graphics specialists and the print industry who require exceptional image quality and reliable productivity.

Exceptional productivity and high speed you can rely on to produce outstanding large format prints.

- New production print modes mean higher speed: 9.29 m²/h output for glossy, 17.56 m²/h for coated media, printing at 52.86 m²/h in maximum speed mode.
- Unrivalled data transmission speeds (4.5 MB/s) via a powerful HP Jetdirect 615n print server card.
- High capacity (680 cc) ink cartridges and long-lasting print-heads reduces user intervention and cost of ownership.
- HP Jetexpress printheads are extra wide for faster speed, with embedded digital logic for superior nozzle monitoring.

Get bright, breathtaking and colour-rich photo images every time you print.

- Superb quality from six ink HP Colour Layering technology and 1200 dpi writing system provides a wide colour gamut, smooth transitions and continuous tones.
- Automatic closed-loop colour calibration gives colour consistency, print after print.

The features include:

- High speed, accurate and high quality in one operation.
- High color accuracy.
- Up to 16 pages double-sided imposition proofs, no more time consuming manual gluing of 2 sheets together.
- Automatic pairing of Recto/Verso, Work & Turn, Work & Tube, Perfector impositions.
- Unattended operation, Automatic printing through hot folders.
- Front/Back Registration of ± 1 mm.
- Seamless integration into existing workflow.
- True data integrity, same data produced from the RIP is used for CTP and proofing.
- VersoJet, an accessory to HP Designjet does not affect the original printer functionalities and the full HP warranty is maintained.
- Up to 6 metres dual-sided posters and banners.
- Works freely between single sided or double-sided work.



VersoJet 60" on hp designjet 5500 printer (60-inch series)

Duplex Manager Software

The data integrity is assured with the Duplex Manager software (DMS) interface, capturing data from all industry standard RIPs and Workflow in a variety of formats.

RIP (Raster Image Processor): is software used to rasterise the job. The Rip generating plate data for CTP (Computer-To-Plate) will generate data for imposition proofs at 600 dpi using a Driver.

The DMS application is used to capture front and back imposition, align them and centralise them on a sheet of dual coated inkjet paper.

Having captured the front and back impositions as a pair, the DMS processes them together to ensure front and back sides are accurately aligned, centered on the selected media and finally sent to the Designjet printer.

The main features of the DMS are:

- Multiple job setups for different types of Impositions, e.g. Recto/Verso, Work&Turn etc.
- Automatic centring of front and back files for accurate registration
- Ink reduction for non ICC profiled jobs or uncoated media.
- Preview of the jobs
- Double-sided printing with/without ICC profiling
- Use Hot Folder technology for connections to multiple PCs or Macs.
- Fileformat: The DMS supports HPRTL from all industry standard RIPs. TIFF (e.g. BitTIFF) is sold as an option.

Consumables

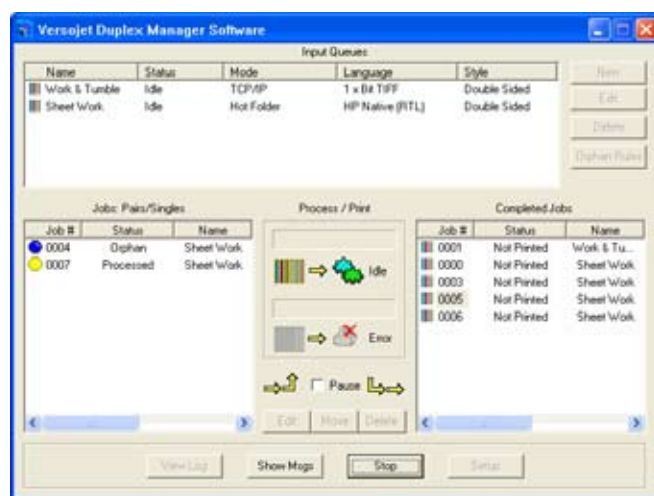
The media depends on the type of work. For indoor and imposition work, matt coated dual-sided paper media is ideal with low weight of 100 g. For indoor posters, 150 g matt coated paper ideal with weight of 150 g. For outdoor work, banner media e.g. Aquabanner dual sided coated is perfect.

For Imposition work the following factors should be considered for selection of paper media:

- At least 10 g equal coating on each side on a thin 90 g base material. Total 100 - 110 g dual-sided paper.

RIP	Driver for RIP	Language used			Input Method	
		HPRTL	BitTIFF	TIFF	Hot-	TCP/IP
Agfa Apogee	Printer Driver	●		●		●
Agfa Apogee X	Printer Driver		●	●	●	
Agfa Printdrive	Proofer/Export	●	●		●	●
ArtWork PCC	RTL Driver	●			●	
ArtWork Nexus	RTL Driver	●	●		●	
Best XXL		●			●	
Best Screen Proof						
Best XF						
Creo Prinergy	RTL Driver	●		●	●	
Creo Brisque	Inproof					
Fuji CelebraNT	Proofer ¹ /TIFF Output ² / Genproofer ³	● ¹	● ²	● ³	●	
GMG Color Proof		●				
Harlequin (All)	ProofReady HP5500 ^{1/}	● ¹	●	●	●	
Heidelberg Delta	V6.2+	●	●		●	
Heidelberg Prinect; PrintReady; Meta Dimension	Colourproof Pro	●		●	●	
Kodak Matchprint						
Rampage	RoomProof Direct	●			●	
Scitex Brisque 3/4	Improof	●			●	
Screen Tiaga/Trueflow				●	●	

List of with the DMS compatible RIP. For other RIPs please enquire support@prooftech.ch



VersoJet Duplex Manager Software (DMS)

- Ability to fold the finished imposition to a folded mock-up. On a 8 page imposition, at least 3 folds are required and the paper quality should allow for easy folding and for the elimination of "bottling and fanning". The thinner the paper the lesser the folding issues.
- The paper media must be able to hold high ink density on both sides and reveal the true representation of the job, as close to the press sheet.
- Minimum dusting qualities. The dust from the large area of the paper media may jam the print heads.
- Ink drying should be instant to avoid media to slip inside the duplex feed rollers.



Versojet 42" on hp designjet 5500 printer (42-inch series)

Technical Specifications

print technology	HP Thermal Inkjet		
print speed (pages per minute) / productivity	dependent on type and print mode		
	maximum speed	production	maximum quality
	52.8 m ² /h (coated) 13.7 m ² /h (glossy)	17.6 m ² /h (coated) 9.3 m ² /h (glossy)	9.3 m ² /h (coated) 5.6 m ² /h (glossy)
	*dye-based ink system on coated paper. UV ink times on heavyweight coated paper are similar.		
maximum resolution	1200 x 600 dpi (on glossy media)		
memory	standard: HP Designjet 5500 series: 128 MB. HP Designjet 5500ps series: 256 MB. maximum: 256 MB. Hard Disk: 40 GB.		
printer languages	HP Designjet 5500 series: TIFF, JPEG, CALS, HP GL/2, HP RTL		
supported file formats by Duplex Manager Software (DMS)	HPRTL: 4-color-CMYK 32bit, 3-color CMY 24 bit, 3 color RGB 24 bit, 6 color CMYK LcLm 48 bit, Files with index color (in all of the above formats) and own palette, max. 8 bit per index, TIFF Contone:CMYK 32 bit, RGB 24 bit, Greyscale 8 bit, BitTIFF, TIFF with user palette		
hardware requirement for DMS	a standard PC workstation is needed to run DMS; min. 1 Ghz CPU, RAM: 256 MB (1 GB RAM recommended for TIFF conversion), min. 20 GB HD, OS: Windows XP/2000, Ethernet card, USB 1.0		
duplex printing	two-sided printing capability with VersoJet attached to printer. Simple, fully automatic duplexing device for printing the front side from roll media and the back side on the sheet media.		
timing	6 - 9 mins for a 8 up dual sided imposition proof.		
accuracy duplex printing	front-to-back registration tolerances*: center position: in any direction < ± 0.5 mm; in the corners: in any direction < ± 1.0 mm. *) applies with approved dual sided coated paper media.		
print length media per print job	for imposition proofing: 600 mm - 3000 mm; for poster/banner production: 600 mm - 6000 mm;		
maximum print length	91.4 m.		
media handling, document finishing	roll feed, sheetfed, automatic cutter, take-up reel - optional on the 42 inch (107 cm) models.		
power requirements	HP Designjet 5500: input voltage 100 - 240 VAC (+/-10%), 50 - 60 Hz, 5 amps max. VersoJet: input voltage 100 - 240 VAC, 50 - 60 Hz, 1.5 amps max.		
power consumption	500 watts maximum.		
dimensions (w x d x h)	out of package: HP Designjet 42-inch models: 198 x 68 x 128 cm; VersoJet 42-inch models: 118 x 66 x 22 cm; HP Designjet 60-inch models: 243 x 68 x 128 cm; VersoJet 60-inch models: 156 x 66 x 22 cm		
product weight	out of package: HP Designjet 42-inch models: 100 kg; VersoJet 42-inch models: 22 kg; HP Designjet 60-inch models: 120 kg; VersoJet 42-inch models: 26 kg		
operating environment	environmental ranges: operating temperature: 15 to 35° C. operating humidity: 20 to 80% RH.		

Ordering Information

versojet	
VJ550042	versojet (42-inch model)
VJ550060	versojet (60-inch model)
VJ500042	conversion kit for hp designjet 5000 printer (42-inch model)
VJ500060	conversion kit for hp designjet 5000 printer (60-inch model)
software	
VJ-DMS	versoJet duplex manager
VJ-DMS-TIFF	TIFF file handling (optional)
approved media	
PP10042F1	42" dual sided inkjet paper, 100 g/m ² , 3" core, 1070 mm x 60 m length
PP13060F1	60" dual sided inkjet paper, 130 g/m ² , 3" core, 1524 mm x 40 m length
PP09042S1	42" uncoated inkjet paper, 100 g/m ² , 3" core, 1070 mm x 60 m length
hp designjet printer	
q1251a	hp designjet 5500 printer (42-inch model)
q1253a	hp designjet 5500 printer (60-inch model)
q1253v	hp designjet 5500 uv printer system (60-inch model)
q1252a	hp designjet 5500ps printer (42-inch model)
q1254a	hp designjet 5500ps printer (60-inch model)
q1254v	hp designjet 5500ps uv printer system (42-inch model)
cables	
c2496a	hp IEEE 1284-compliant bidirectional parallel cable, 9 ft
c2947a	hp bi-tronics parallel cable
memory	
c2382a	hp designjet DIMM 128 MB memory module
accessories	
q1286a	hp UV upgrade kit with ink/42
q1287a	hp UV upgrade kit with ink/60
q1285a	hp dye-based ink upgrade kit (60)
paper handling	
c2385a	hp 42-inch spindle
c2386a	hp 60-inch spindle
c6087I	hp designjet take-up reel kit (42"/1.07m)



Authorised VersoJet Dealer:

VersoJet is manufactured by

ProofTech GmbH
Holzmattstrasse 29
CH-8953 Dietikon
Switzerland

Telephone: +41 44 730 14 20
Fax: +41 44 730 14 22
Email: info@prooftech.ch
Internet: www.prooftech.ch